

INNOVATIVE FILTRATION SOLUTIONS FOR GAS PHASE APPLICATIONS





IF YOU ARE HAVING ISSUES WITH ...

DIESEL ODORS
FORMALDEHYDE ODORS
LANDING PAD FUMES
LOADING DOCK FUMES
HELICOPTER FUMES
AIRPLANE FUMES
TRUCK FUMES

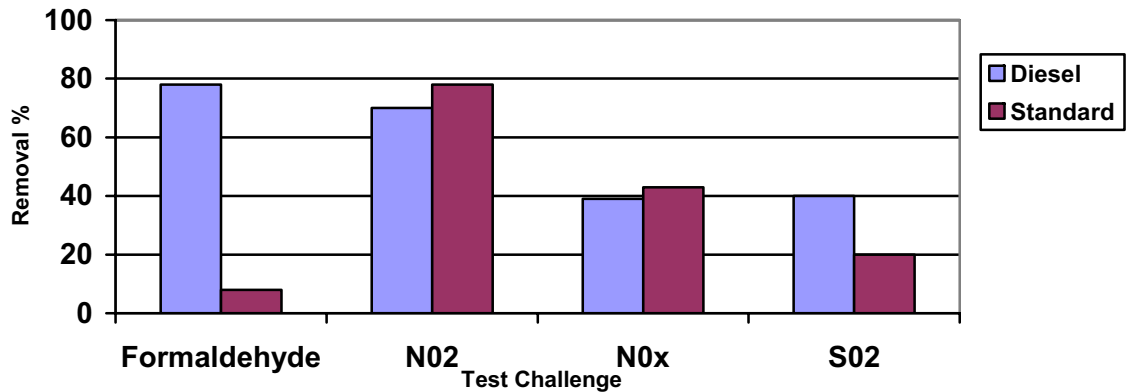
**... then the solution is TRI-SORB XL
DIESEL CARBON PLEATED FILTERS**



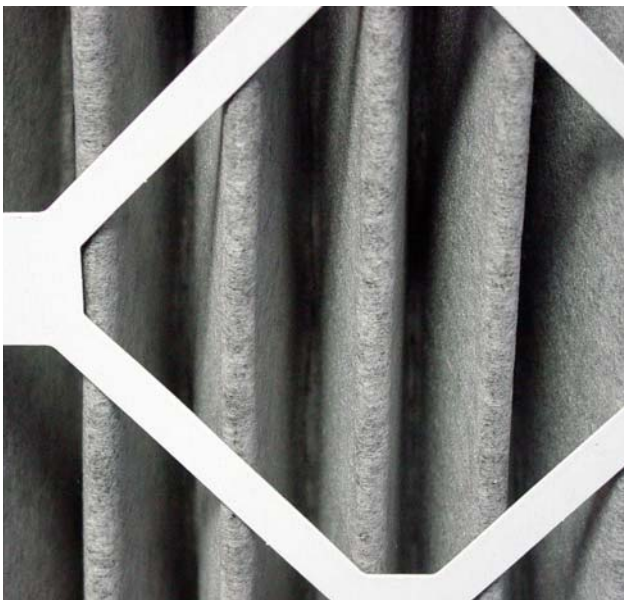
Tri-Dim's TRI-SORB XL DIESEL PLEATED FILTERS are specifically designed to target diesel and formaldehyde odors. Standard carbon is only moderately effective in removing diesel and formaldehyde odors and its use can lead to minimal results and to reoccurring odor complaints.

TRI-SORB XL DIESEL PLEATED FILTERS also offer excellent removal of a broad spectrum of odors and gases allowing it to be used in general odor applications.

The chart to the right shows a comparison of Tri-Sorb XL Diesel Carbon vs. standard carbon and their efficiencies against several test challenges.



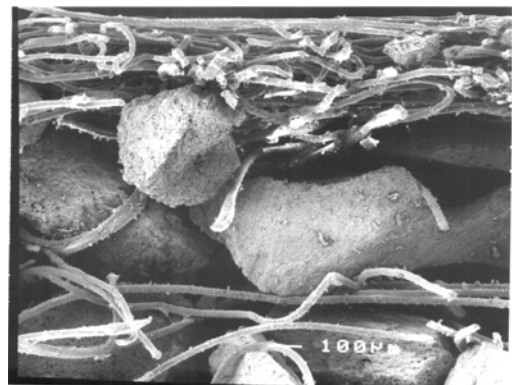
Tri-Sorb Diesel XL did very well against the Formaldehyde test challenge (the test challenge for Diesel) and performed similarly to standard carbon on a variety of other challenges.



Tri-Dim's Tri-Sorb Diesel XL Carbon Filter also features a heavy duty, moisture resistant, beverage board frame. This heavy-duty frame along with the Tri-Sorb self-supporting media offers a robust filter for the demanding, real world applications.

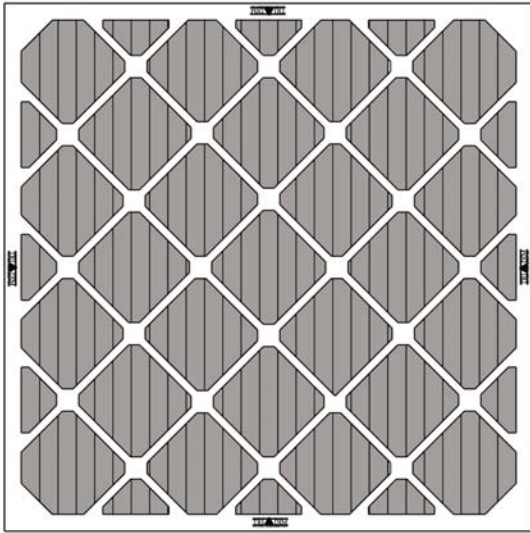
The Tri-Sorb Diesel XL Filter is available in both 2 and 4-inch depths, with sixteen standard sizes. Special sizes are also available.

The Tri-Sorb XL Diesel filters utilize our "Extended Life" media that uses a fiber-to-carbon bonding to eliminate the use of adhesives. This allows virtually the entire surface of the carbon to be available to capture gases. The Tri-Sorb XL Diesel filters also employ a smaller, 32-mesh carbon that offers a higher level of utilization than standard carbon products. This leads to higher removal efficiencies of the targeted gases.



TECHNICAL INFORMATION

DRAWING



SPECIFICATION TRI-SORB XL DIESEL SERIES

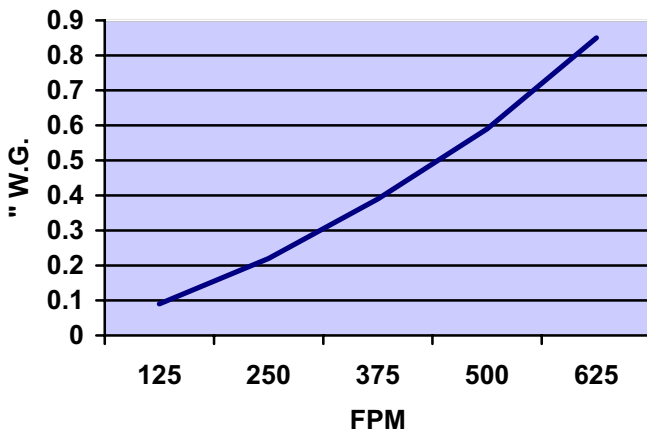
RECOMMENDED FINAL RESISTANCE:
1.0" W.G.

APPROX. SQ. FT. OF MEDIA:
(per Sq. Ft. Face Area)
2" Deep = 4.8 Sq. Ft.
4" Deep = 7.2 Sq. Ft.

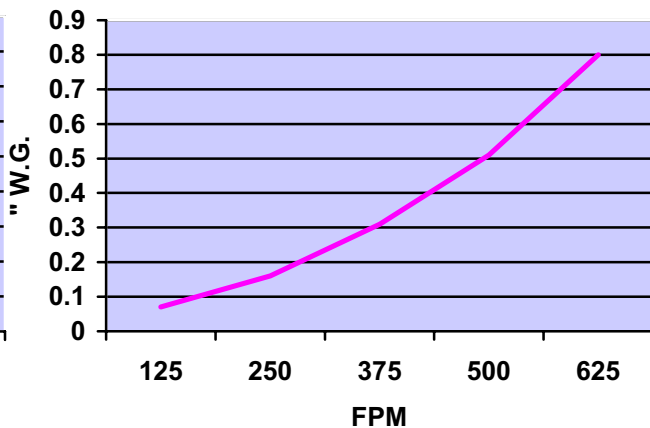
**MAXIMUM CONTINUOUS OPERATING
TEMPERATURE:**
90°C (194°F)

INITIAL RESISTANCE CURVES

TRI-SORB XL DIESEL 2" PLEAT



TRI-SORB XL DIESEL 4" PLEAT



Tri-Dim Filter Corporation is committed to continual product development – all descriptions, specifications and performance data are subject to change without notice.
Tri-Dim® and Tri-Dek® are Registered Trademarks of Tri-Dim Filter Corporation. Tri-Sorb XL™ is a Trademark of Tri-Dim Filter Corporation.



TRI-DIM FILTER CORPORATION

P.O. BOX 466 • 93 INDUSTRIAL DRIVE
LOUISA, VA 23093

(540) 967-2600 • FAX: (540) 967-2835

EMAIL: info@tridim.com • Website: www.tridim.com
TOLL FREE 1-800-458-9835

Local Representation: