

HIGH EFFICIENCY SYNTHETIC BAG FILTERS



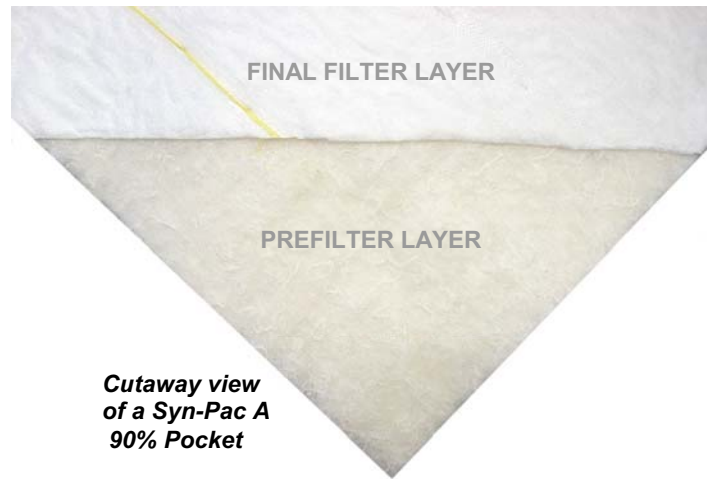


**SYN-PAC A BAG FILTERS
EXTENDED SURFACE
POCKET FILTERS THAT
OFFER SUPERIOR
PERFORMANCE,
LONG SERVICE LIFE,
AND HIGH EFFICIENCY.**

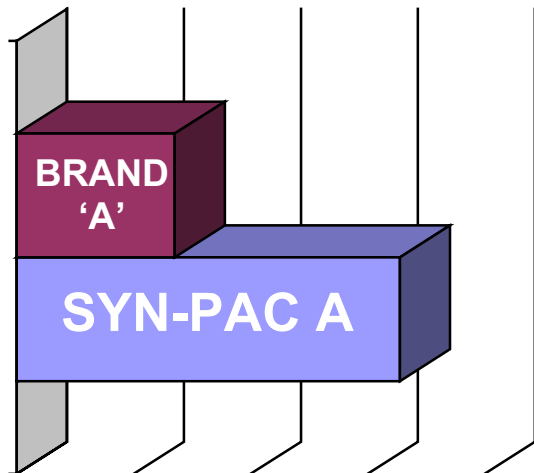
MEDIA – DUAL STAGE

SYN-PAC A Pocket Filters use an exclusive combination of two layers of synthetic media. This combination of media allows the SYN-PAC A to outperform other synthetic bag filters.

The SYN-PAC medias consist of a prefilter layer that allows for management of the dirt load by capturing larger particulate. This filtering of larger particles protects the second high efficiency media by removing particles that would clog the media and substantially shorten the service life. SYN-PAC's media arrangement also allows for high efficiency – up to MERV 15.



*Cutaway view
of a Syn-Pac A
90% Pocket*



DIRT HOLDING and SERVICE LIFE

EXTENDED SERVICE LIFE

SYN-PAC A features an extended service life when compared to other synthetic bag filters. This longer service life is produced from the Dual Stage SYN-PAC media. The media was engineered for extreme dust holding characteristics. The more dust a filter can hold the longer the service life the filter will have.

The true cost of a filter is not the initial purchase price, but is in efficiency, service life, energy consumption, etc. The increased service life offers a huge financial payback - saving money on freight, handling, change-out labor, filter purchases, procurement cost, disposal cost, and more.

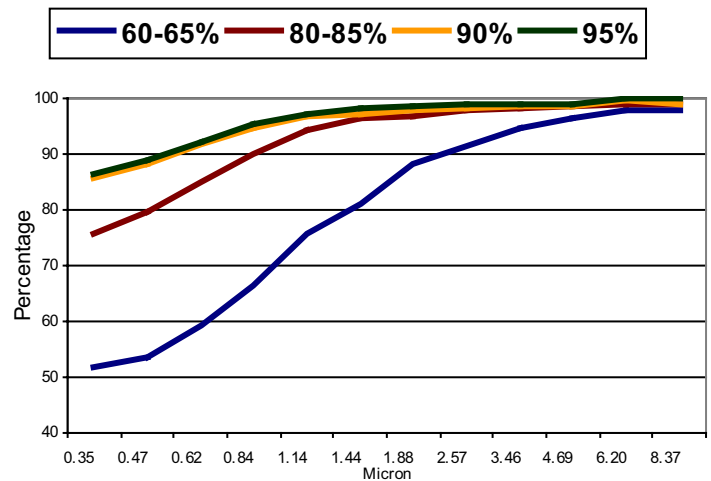
EFFICIENCY OPTIONS

SYN-PAC A Bag Filters are offered in a wide range of efficiencies – these include 60-65% (MERV 12), 80-85% (MERV 14), 90% (MERV 15) and 95% (MERV 15).

The SYN-PAC 95% version offers the highest level of particle removal at a low resistance – greater than 97% initial efficiency of 1 micron sized particles with only 0.34”W.G. (85 PA) of resistance for a 24x24x30 8 pocket configuration.

Minimum Efficiency by Particle Size

(per ASHRAE Standard 52.2-1999)



FILTER CONSTRUCTION

Tri-Dim's SYN-PAC A Bag Filters are constructed in a controlled environment with the highest level of quality. The pocket seams are sealed with an adhesive to ensure no leakage and to minimize the surface area lost due to pocket construction.

The pockets are secured to double turned galvanized hoops that are secured to a roll formed header. This process prevents the bypass of unfiltered air and adds rigidity.

ADDITIONAL OPTIONS

ALUMINUM HEADER – SYN-PAC A filters are offered in an extruded aluminum header that will not rust.

CUSTOM SIZES - In addition to the 41 standard sizes, SYN-PAC A is available in virtually any combination of height, width, depth and number of pockets. There are some restrictions so please consult with the factory for availability.

ANTIMICROBIAL - SYN-PAC A comes with an optional antimicrobial treatment that is EPA registered. The antimicrobial is effective by inhibiting the growth of a large variety of microorganisms including bacteria, fungi and viruses.

WIRE SUPPORT - The wire support (see photo – right) option allows for the continual support of the pockets by a series of wires attached to the back of the pockets and to the bottom of the header.



PRODUCT SPECIFICATIONS

EFFICIENCY

60-65%

ASHRAE 52.1 Dust Spot Average 64%
ASHRAE 52.2 MERV 12 @ 492 fpm

80-85%

ASHRAE 52.1 Dust Spot Average 80%
ASHRAE 52.2 MERV 14 @ 492 fpm

90%

ASHRAE 52.1 Dust Spot Average 94%
ASHRAE 52.2 MERV 15 @ 492 fpm

95%

ASHRAE 52.1 Dust Spot Average 97%
ASHRAE 52.2 MERV 15 @ 492 fpm

TEMPERATURE LIMIT

Maximum 140° F (60° C) Constant

FINAL RESISTANCE

1.50"W.G. (373 PA)

UL CLASS 2

(Class 1 Syn-Pac Bag Filters available)

SQUARE FEET OF MEDIA

24x24x22 8 Pocket 610x610x559	58 sq. ft. 5.4 m ²
12x24x22 4 Pocket 305x610x559	29 sq. ft. 2.7 m ²
24x24x26 8 Pocket 610x610x660	69 sq. ft. 6.4 m ²
12x24x26 4 Pocket 305x610x660	35 sq. ft. 3.3 m ²
24x24x30 8 Pocket 610x610x762	80 sq. ft. 7.4 m ²
12x24x30 4 Pocket 305x610x762	40 sq. ft. 3.7 m ²
24x24x36 8 Pocket 610x610x914	96 sq. ft. 8.9 m ²
12x24x36 4 Pocket 305x610x914	48 sq. ft. 4.5 m ²

Please note that other sizes, depths and pocket combinations are available.

OPTIONS

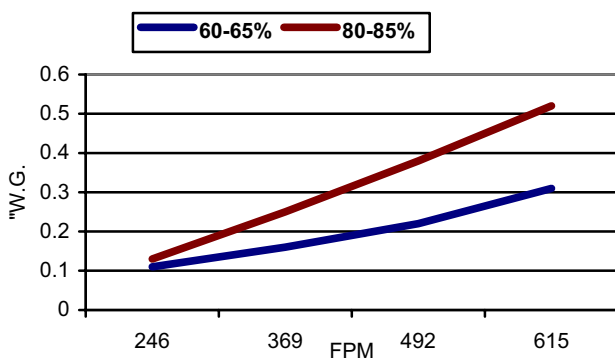
GPA Adaptor – Syn-Pac A Bag Filters come with the option of a GPA Header to allow for easy, time saving installation into Glide/Pack® housings.

Gasketing – Charcoal Ether Foam Gasketing is available on vertical sides, horizontal sides, upstream face or downstream face of header.

RESISTANCE TO AIRFLOW 60-55% AND 80-85%

24x24x30 8-Pocket

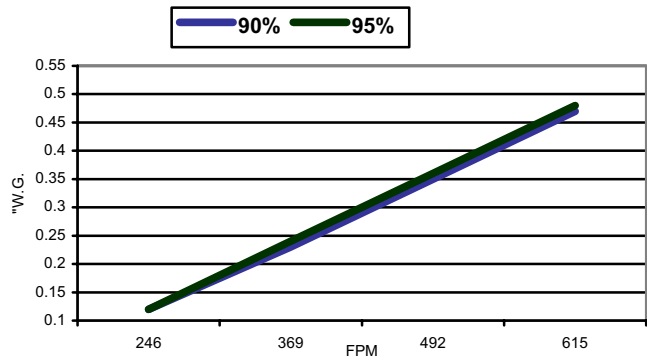
From Independent ASHRAE Test Results



RESISTANCE TO AIRFLOW 90% AND 95%

24x24x30 8-Pocket

From Independent ASHRAE Test Results



Tri-Dim Filter Corporation is committed to continual product development – all descriptions, specifications and performance data are subject to change without notice.

Tri-Dim® and Tri-Dek® are Registered Trademarks of Tri-Dim Filter Corporation. Syn-Pac™ is a Trademark of Tri-Dim Filter Corporation.

Glide/Pack® is a Registered Trademark of Camfil Farr and is used for identification purposes only.



TRI-DIM FILTER CORPORATION

P.O. BOX 466 • 93 INDUSTRIAL DRIVE
LOUISA, VA 23093

(540) 967-2600 • FAX: (540) 967-2835

EMAIL: info@tridim.com • Website: www.tridim.com

TOLL FREE 1-800-458-9835

Local Representation: